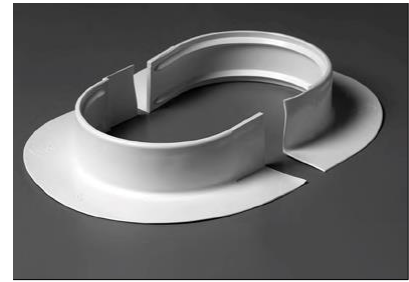


## PRODUCT DESCRIPTION

**Use:** Used to seal uneven penetrations through the membrane that are difficult to flash. The penetration pan is comprised of two pieces that allow for positioning around objects to be flashed. A welding tab is included to seal the penetration pan once positioned.



**Material:** Two-piece moulded TPO (thermoplastic polyolefin) pocket with a rigid vertical wall and preformed flange.

**Colour:** White

## INSTALLATION/APPLICATION

Refer to the Nuraply TPO application instructions and detail drawings.

## PACKAGING AND DIMENSIONS

Size	19cm x 15cm Oval
Thickness	3.97mm

## STORAGE

Store indoors, out of direct sunlight, in a cool, dry location.

## WARRANTY INFORMATION

Approved for use in any Nuraply TPO Membrane Warranty.

*The information in this product data sheet is based on our experience and testing. It represents the latest information available at the time of printing, but no guarantee of its accuracy is made or implied, nor responsibility taken for use to which this information may be put. We reserve the right to alter or up-date information parameters and formulations at any time without notice.*