
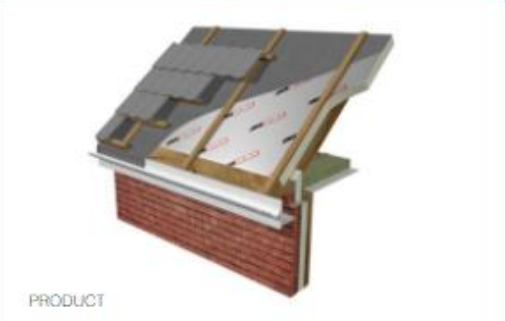



Upcoming Webinars

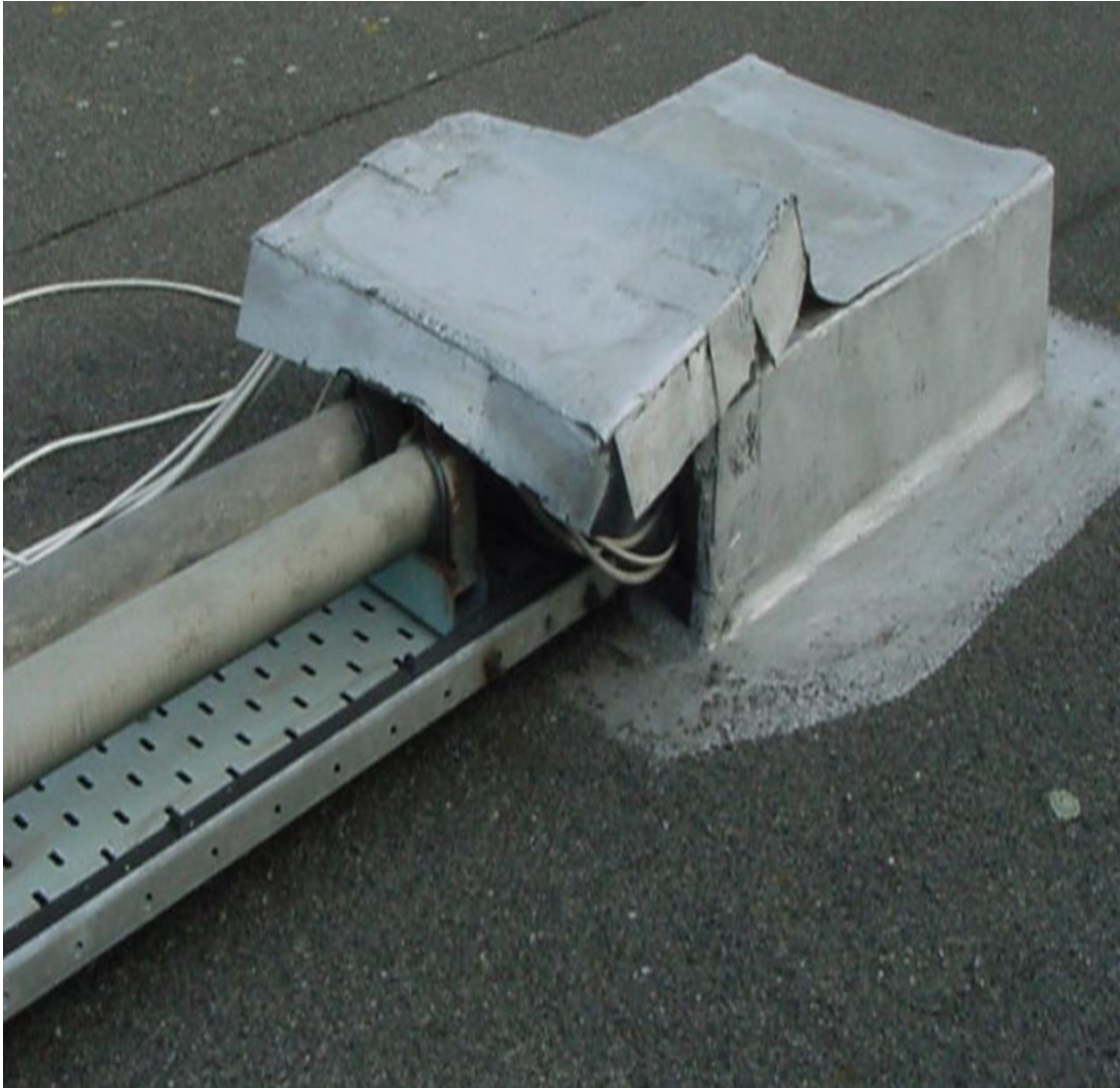
 <p>SUSTAINABILITY</p> <h3>Aligning with NZ Architects Declare</h3> <p>Understanding how we can align with principles set by Architects Declare.</p> <p>📅 3rd September 2020, 10:30:00am</p> <p>🕒 30min</p> <p>Register now</p>	 <p>PRODUCT</p> <h3>Thermacore Warm Roof System</h3> <p>Discussing the high performing Gerard pitched Warm Roof solution Thermacore.</p> <p>📅 17th September 2020, 10:30:00am</p> <p>🕒 30min</p> <p>Register now</p>	 <p>DESIGN</p> <h3>5 Waterproofing Myths Busted</h3> <p>Discussing the 5 biggest myths faced in the waterproofing industry.</p> <p>📅 1st October 2020, 10:30:00am</p> <p>🕒 30min</p> <p>Register now</p>
--	---	---

Penetrations and Fixings for Solar Panels



Rod Southwood Nuralite



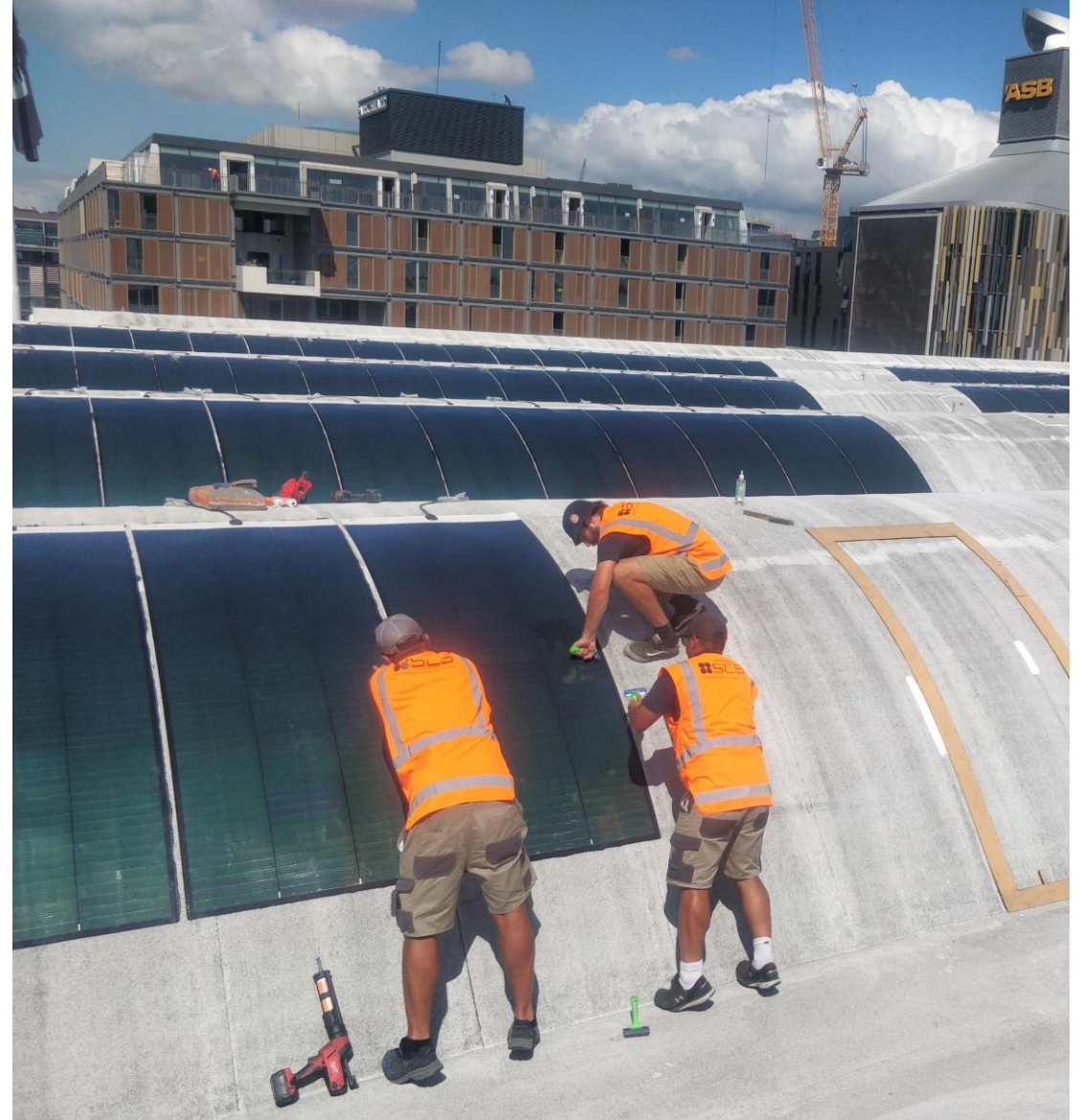




Shay Brazier
Revolve Energy

**re /
vo / ve
energy**





System Selection

Solar Panels

The choice to add sheet solar panels were made to curve with the roof's waves.

Components

Nuralite Fixing Plates were used to support the rails. They were installed to maintain the waterproofing integrity.

Waterproofing

Nuraply 3PM Double Layer System

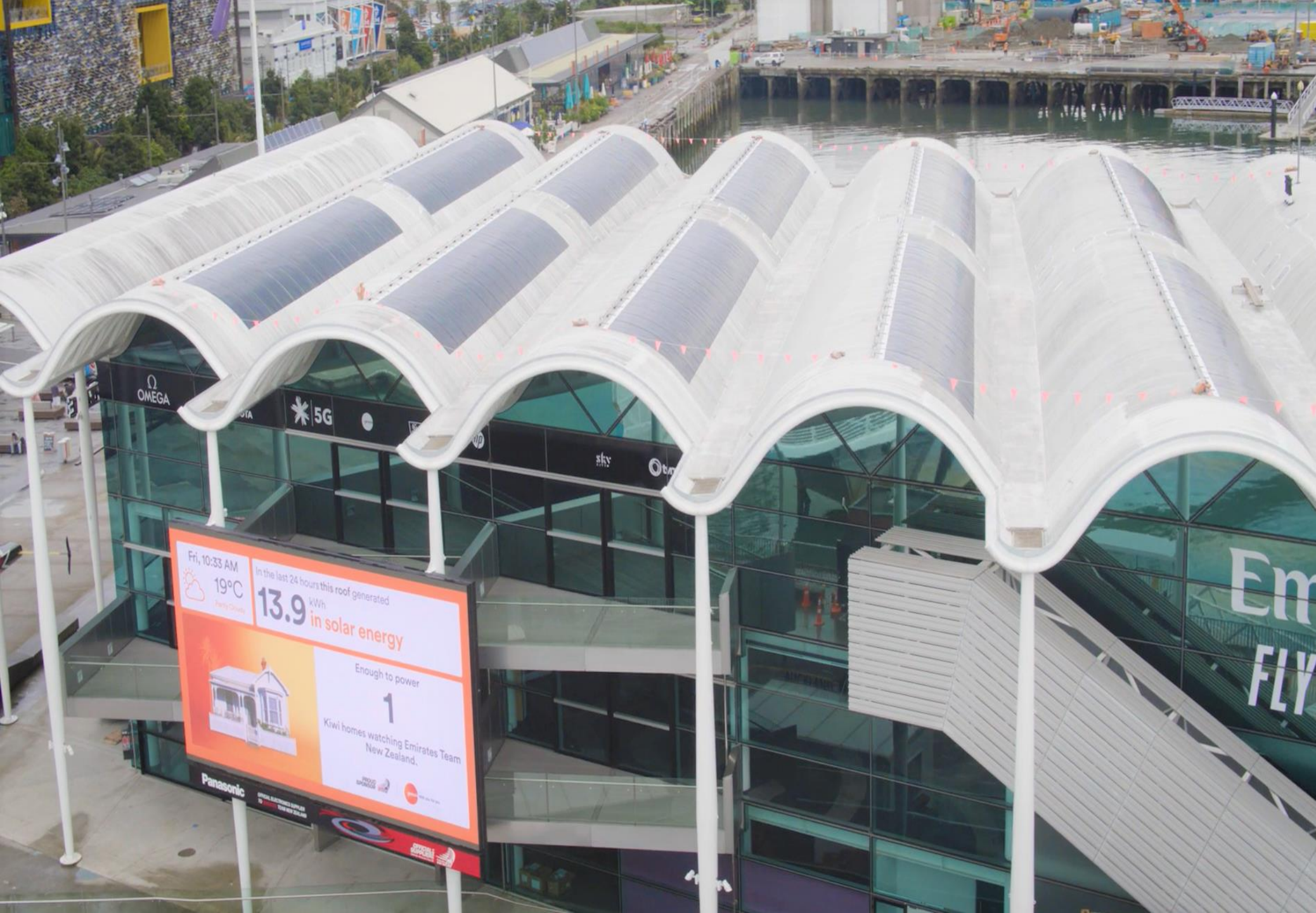
Client

Genesis Energy

Applicator

Gunac Access





Fri, 10:33 AM
19°C
Partly Cloudy

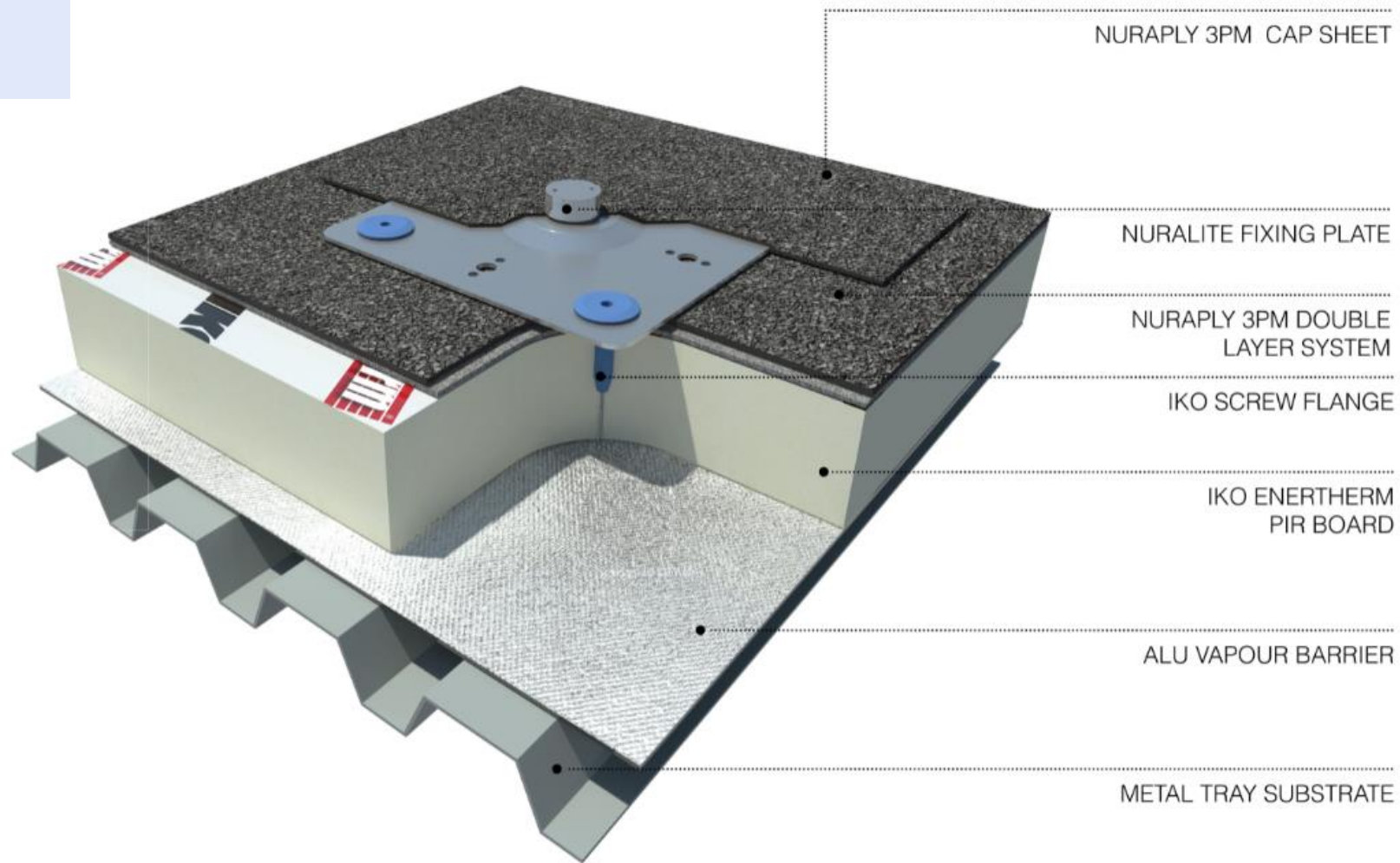
In the last 24 hours this roof generated
13.9 kWh in solar energy

Enough to power
1
Kiwi homes watching Emirates Team New Zealand.

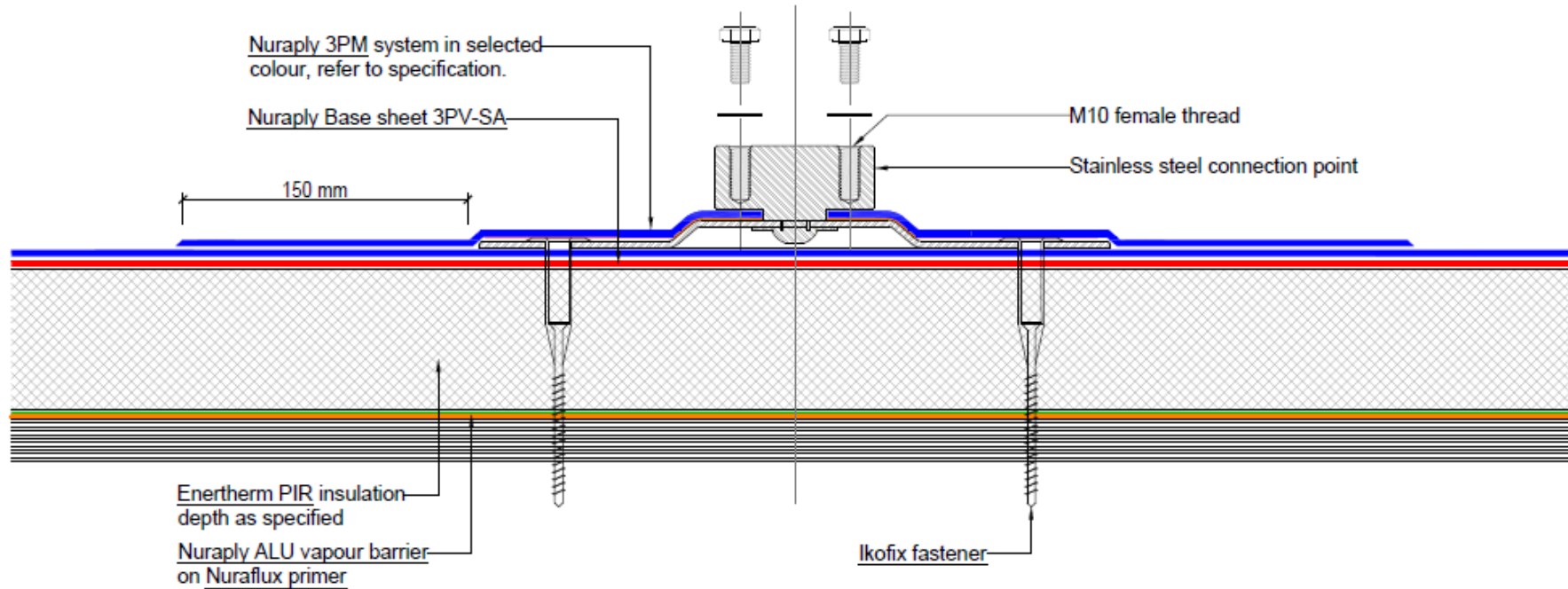
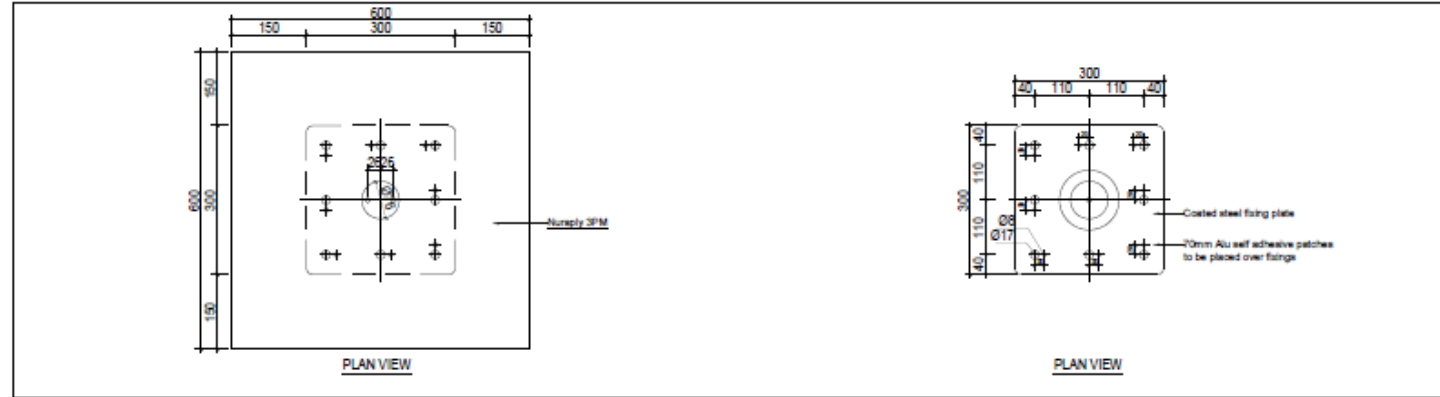
Panasonic

OFFICIAL PARTNER OF THE 2020 OLYMPIC GAMES

Render of Nuralite Fixing Plate



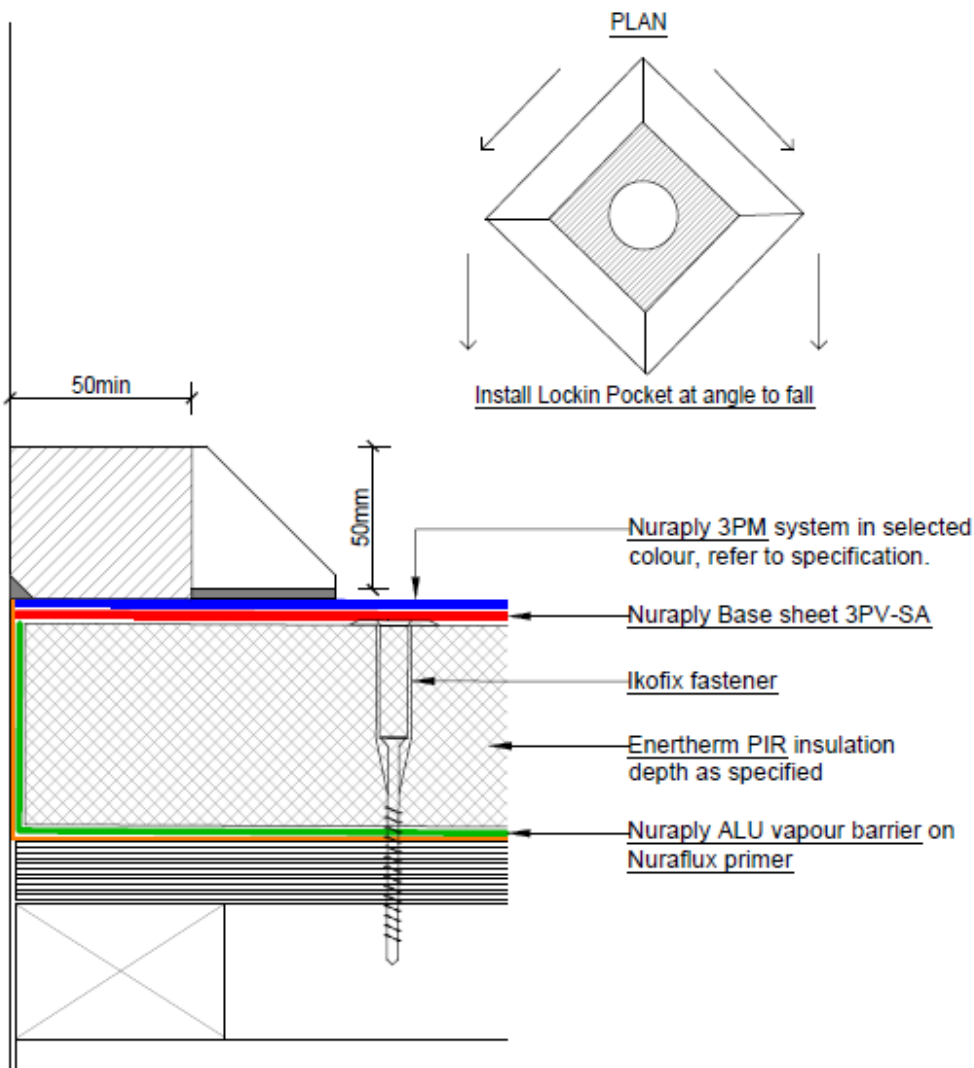
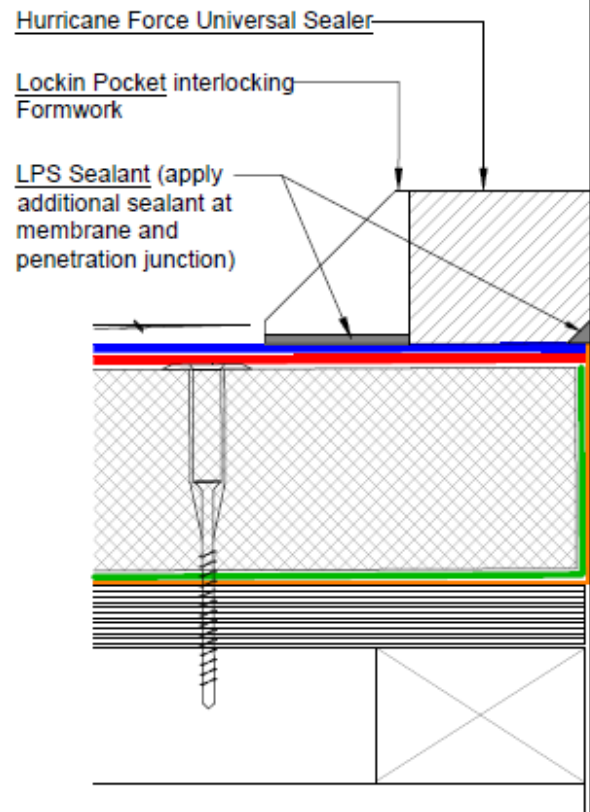
Nuralite Fixing Plate Detail



SECTIONAL ELEVATION: CENTRE FIXING NOT SHOWN

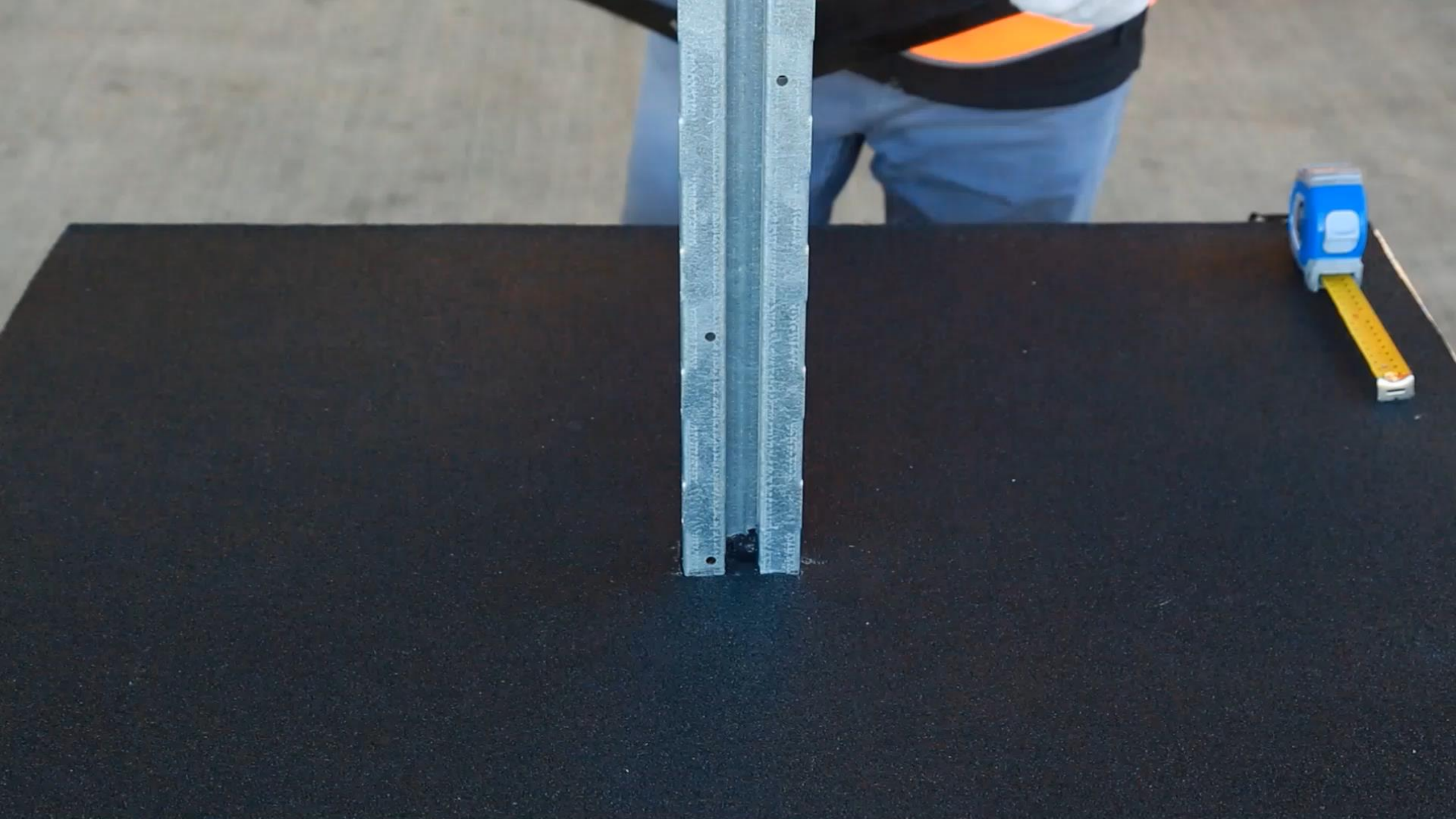
Lockin Pocket Detail

Interlocking Corners 50mm x 50mm Internal Face.
50mm in height.
Interlocking Straights 150mm, 200mm, 250mm,
300mm
Fully molded square pockets 150mm, 200mm






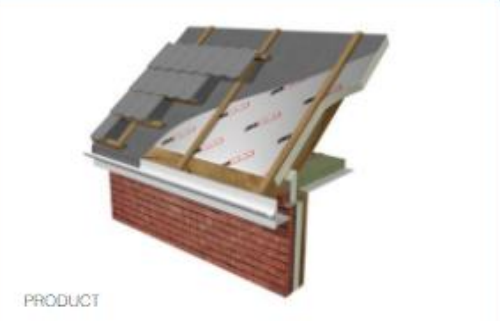





Lockin Pocket used in Tanking







Upcoming Webinars

 <p>SUSTAINABILITY</p> <h3>Aligning with NZ Architects Declare</h3> <p>Understanding how we can align with principles set by Architects Declare.</p> <p> 3rd September 2020, 10:30:00am</p> <p> 30min</p> <p>Register now</p>	 <p>PRODUCT</p> <h3>Thermacore Warm Roof System</h3> <p>Discussing the high performing Gerard pitched Warm Roof solution Thermacore.</p> <p> 17th September 2020, 10:30:00am</p> <p> 30min</p> <p>Register now</p>	 <p>DESIGN</p> <h3>5 Waterproofing Myths Busted</h3> <p>Discussing the 5 biggest myths faced in the waterproofing industry.</p> <p> 1st October 2020, 10:30:00am</p> <p> 30min</p> <p>Register now</p>
---	--	--