

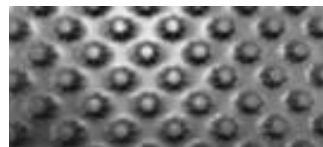
## NURADRAIN TECHNICAL DATA SHEET

### DESCRIPTION AND AREAS OF USE

A high-density polyethylene (HDPE) dimpled sheet. Specifically designed as a backfill protection and vertical drainage board for sub-grade tanking. Nuradrain is designed to reduce hydrostatic pressure behind walls by providing an unimpeded drainage path to the base drainage coil.

### FINISHING

Black plastic sheet with 7.5mm dimples.



### APPLICATIONS

Protection and drainage board for waterproofing membranes of below-grade tanking.

### COMPOSITION

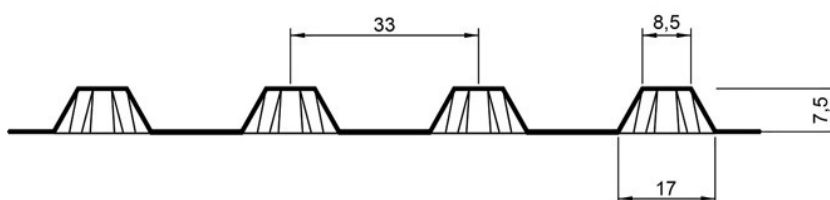
High density polyethylene (HDPE)

### TECHNICAL SPECIFICATIONS (average values)

	Value	Unit	Standard
N. of dimples	1907	-	-
Compressive Strength	180 ±20%	KN/m <sup>2</sup>	UNE-EN-ISO 604
Tensile strength, approx.	>450	N/60mm	UNE EN 12311-1
Tear strength, approx.	>25	%	UNE EN 12311-1
Modules of elasticity	1500	N/mm <sup>2</sup>	ISO 178
Water absorption	1	mg/4d	DIN 53495
Drainage capacity, approx.	4.8	l/s.m	-
Temperature range	-30 a 80	°C	-
Air volume between nodules, approx.	5.9	l/m <sup>2</sup>	-

## DIMENSIONS

	Value	Unit
Length	28	m
Width	2.1	m
Dimple Height	$7.3 \pm 0.2$	mm
Roll area	58.8	m <sup>2</sup>
Rolls per pallet	6	rolls



## INSTALLATION NOTES

Raised side of Nuradrain to be installed against the membrane. Can be held in place prior to back fill with either, Nuralite adhesive tape supplied by Nuralite, sand bagging or Nuradrain self-adhesive mechanical fixings supplied by Nuralite.

Overlap sheets joints at 120mm horizontally and 200mm vertically and hold in place with Nuralite adhesive tape.

Initial backfilling should be by hand around the base of Nuradrain but can be completed mechanically. Care must be taken to prevent damage to Nuradrain during the back filling process. Fix in place the Nuradrain termination bar before back filling is completed.

Nuradrain can withstand the lateral load applied by compaction equipment up to 100mm from the face. Excessive compaction force should be avoided.

## SAFETY, STORAGE & HANDLING INFORMATION

Do not stack pallets

Store indoors

## TRANSPORT

## CLASSIFICATION N/A

*The information in this product data sheet is based on our experience and testing. It represents the latest information available at the time of printing, but no guarantee of its accuracy is made or implied, nor responsibility taken for use to which this information may be put. We reserve the right to alter or up-date information parameters and formulations at any time without notice.*