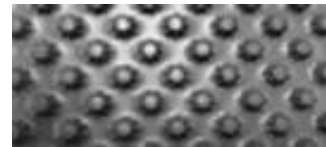

NURADRAIN TECHNICAL DATA SHEET

DESCRIPTION AND AREAS OF USE

A high-density polyethylene (HDPE) dimpled sheet. Specifically designed as a backfill protection and vertical drainage board for sub-grade tanking. Nuradrain is designed to reduce hydrostatic pressure behind walls by providing an unimpeded drainage path to the base drainage coil.

FINISHING

Black plastic sheet with 8mm dimples.



APPLICATIONS

Protection and drainage board for waterproofing membranes of below-grade tanking.

COMPOSITION

High density polyethylene (HDPE)

TECHNICAL SPECIFICATIONS (average values)

| | |
|------------------------|-----------------------------|
| Weight | 500gm m2 (EN 965) |
| Foil Thickness | 0.55mm |
| Dimple Height | 8mm |
| Drainage Volume | 5.8 l/m2 |
| Compression Resistance | >200 KN/m2 (EN ISO 826 adp) |
| ALL. MD | >%20 (EN ISO 10319) |
| ALL. CD | >%25 (EN ISO 10319) |
| Heat Resistance | -30°C / +60°C |
| Tensile Resistance MD | >250N/5cm (EN ISO 10319) |
| Tensile Resistance CD | >250N/5cm (EN ISO 10319) |

DIMENSIONS

| | Value | Unit |
|-----------------|-------|----------------|
| Length | 20 | m |
| Width | 2.0 | m |
| Dimple Height | 8.0 | mm |
| Dimple Coverage | 1200 | m ² |

INSTALLATION NOTES

Raised side of Nuradrain to be installed against the membrane. Can be held in place prior to back fill with either, Nuralite adhesive tape supplied by Nuralite, sand bagging or Nuradrain self-adhesive mechanical fixings supplied by Nuralite.

Overlap sheets joints at 120mm horizontally and 200mm.

Initial backfilling should be by hand around the base of Nuradrain but can be completed mechanically. Care must be taken to prevent damage to Nuradrain during the back filling process. Fix in place the Nuradrain termination bar or adhesive tape before back filling is completed.

Nuradrain can withstand the lateral load applied by compaction equipment up to 100mm from the face. Excessive compaction force should be avoided.

SAFETY, STORAGE & HANDLING INFORMATION

Do not stack pallets and must be stored upright

Store indoors

TRANSPORT CLASSIFICATION

N/A

The information in this product data sheet is based on our experience and testing. It represents the latest information available at the time of printing, but no guarantee of its accuracy is made or implied, nor responsibility taken for use to which this information may be put. We reserve the right to alter or up-date information parameters and formulations at any time without notice.