

INSTALLATION METHOD STATEMENT



Preprufe® 300R

CONTENTS

GENERAL PARAMETERS	2
PRODUCT SELECTION	2
PREPARATION	3
DETAILING	3
FINAL PREPARATION FOR MEMBRANE APPLICATION	3
MEMBRANE APPLICATION	4
PREPRUFE® 300R APPLICATION	4
JUNCTION WITH ASSOCIATED WATERPROOF MEMBRANES AFTER CONCRETE PLACEMENT	5
REPAIR OF DAMAGED MEMBRANE	6
PLACEMENT OF CONCRETE	6
REMOVAL OF FORMWORK	6
APPLICATION RECORDS	6
SAFE2TORCH CHECK LIST	7
BITUTHENE®/PREPRUFE® CONCRETE SUBSTRATE READINESS CHECKLIST	8
BITUTHENE®/PREPRUFE® INSTALLED PRODUCT CHECKLIST BEFORE CONCRETE POOR	9
DETAILS	11

The information in this product Method Statement is based on Nuralite Waterproofing Ltd experience and testing. It represents the latest information available at the time of printing, but no guarantee of its accuracy is made or implied, nor responsibility taken for use to which this information may be put. We reserve the right to alter or up-date information parameters and formulations at any time without notice.

INSTALLATION METHOD STATEMENT

GENERAL PARAMETERS

This statement describes the material requirements and application procedures for Preprufe® 300R waterproof membrane system.

Preprufe® 300R is designed as a premium quality, pre-applied protective waterproof sheet membrane. Its unique integral adhesive binds with fresh concrete to provide an exceptional bond between the concrete substrate and membrane. This enables Preprufe® 300R to be installed in blind-side applications. It is used in conjunction with Preprufe® Tape and Bituthene® LM Liquid Membrane, to provide a reliable waterproof envelope for long term protection of the structure.

The Preprufe® 300R membrane system is designed to be mindful of the environment, having very low VOC. Preprufe® 300R and Preprufe® Tape are zero VOC materials. Bituthene® LM has a low VOC of 80g/L.

Preprufe® 300R is well suited for use in most areas of application in industrial, commercial, and civil design. It has been formulated using patented technology and offers the particular benefits of high tensile, tear and adhesive strengths, plus high (minimum 300%) elongation and puncture resistance. Combined with properties of methane and radon gas resistance, chemical and microbial resistance, as well as being effective in all types of soils and waters (protecting the structure from salt or acid sulphate attack), the Preprufe® 300R system provides long term protection to concrete substrates in high performance applications.

Preprufe® 300R is BBA Certified for basement Grades 2, 3 & 4 to BS 8102:1990

These properties make Preprufe® 300R suitable for areas where soil conditions are problematic and ground settlement is possible, as well as zero access situations such as confined sites and retrofit lift wells etc.

Preprufe® 300R may remain exposed for up to 42 days after application and before placement of concrete, without detrimental effect. The protective surface film of Preprufe® 300R and Preprufe® Tape must be removed before concrete is installed.

Preprufe® 300R may be installed to removable or permanent timber formwork or shuttering. All formwork and void formers installed must be appropriately designed and installed by formwork professionals and the main contractor, to resist movement and blowout during the concrete installation process. Formwork movement or blowout is beyond the control of GCP or the waterproofing applicator and could result in separation of membrane laps leading water leakage.

The waterproofing applicator is required to follow all requirements detailed in the Project Specification, this Installation Method Statement, NURALITE Product Data Sheets and other provided NURALITE documentation relative to this project. Variances can be implemented only after consultation between the applicator, the managing contractor and the NURALITE Technical Department & acceptance of the proposed variance by the managing contractor.

PRODUCT SELECTION

Apply Preprufe® 300R membrane system to project areas as follows:

- 1) Base slabs and basement floors
- 2) Basement walls
- 3) Tunnels
- 4) Lift pits
- 5) Tanks

INSTALLATION METHOD STATEMENT

PREPARATION

Substrate Suitability

All substrates provided must be regular, smooth and stable with no gaps, voids or irregularities greater than 12mm wide or 12mm deep. Substrates must be designed by the main contractor, architect or substrate supplier to resist the weight and force experienced during concrete placement, without movement or deflection.

Substrate Selection General

All surfaces – It is essential to create a sound and solid substrate to eliminate movement during the concrete placement process.

Horizontal Blinding

Monolithic concrete blinding slab should be used. The blinding must be free of loose aggregate and sharp protrusions.

An angular profiled blinding is recommended rather than a sloping or rounded substrate. The surface does not need to be dry before waterproof membrane application, however standing water must be removed.

Vertical - Rockwork

Rockwork shall be sound and smooth with variations less than 12mm. Protrusions larger than 12mm shall be removed.

Large voids in the rockwork surface shall be faced with shotcrete and struck smooth, level with the surrounding rock surface. Where voids are small or limited in number, patch using high strength, low shrink cementitious concrete repair mortar, finishing flush with the surrounding rock surface.

Where shotcrete or patching of rock face voids is not possible or practical, plywood, timber lagging or other lost formworks may be used as the substrate, provided they are designed with sufficient rigidity to resist deflection or movement where they span voids or are otherwise unsupported. The main contractor must be satisfied that this lost formwork is designed suitably for the purpose, based on the concrete mass of their structural design.

Formwork systems must be close butted to provide full support to the membrane and be not more than 12mm out of alignment.

If formwork will be subjected to water contact, the formwork must be constructed from a water resistant material that will not lose strength or rigidity when damp.

DETAILING

Grout all substrate penetrations for stability.

FINAL PREPARATION FOR MEMBRANE APPLICATION

Inspect substrate to verify suitability and readiness.
Remove standing water from substrates.

INSTALLATION METHOD STATEMENT

MEMBRANE APPLICATION

Evaluate Local Conditions

Before proceeding with membrane application, determine if weather conditions will be conducive to achieving quality application. This must be determined by the applicator on site.

Guidelines follow:

- a) Ambient temperature - between -4°C and 40°C.
- b) Substrate temperature - between -4°C and 60°C.
- c) Do not apply materials during conditions of rain, mist, fog or snow. Minor dampness or condensation to selvedge's may be removed by gentle warming with a hot air gun.

If these conditions cannot be met, application should be suspended until conditions are more favourable.

Allow to cure fully before membrane application commences.

Required Equipment

Safety knife, straight edge, tape measure, spatula, scrapers, edge roller, brushes, broom, empty pail, clean rags, vacuum or blower.

PREPRUFE® 300R APPLICATION

General

Preprufe® 300R shall be applied at temperatures of -4°C or above. During cold or damp conditions, the selvedge and tape adhesive can be gently warmed using a hot air gun or similar to remove moisture or condensation and improve initial adhesion.

Horizontal Substrates

Place the Preprufe® 300R membrane HDPE side to the substrate with coated adhesive side facing towards the concrete pour. (To identify which side is which, Preprufe® has a thin, removable, clear plastic release liner film on the adhesive side. This release liner film should face the concrete pour.)

End laps should be staggered to avoid a build-up of layers. Leave plastic release liners in place until overlap procedure is completed.

Accurate position succeeding sheets to overlap the previous sheet 75mm along the marked selvedge.

Ensure the underside of the succeeding sheet is clean, dry, and free from contamination before attempting to overlap. Peel back the plastic release liner from between the overlaps as the two layers are bonded together. Ensure a continuous bond is achieved without creases and roll firmly with a heavy roller.

Immediately remove completely the plastic release liner from the Preprufe® 300R surface. Any initial tack will quickly disappear.

Vertical Substrates

Mechanically fasten the membrane vertically using fasteners appropriate to the substrate with

INSTALLATION METHOD STATEMENT

the adhesive (plastic release film) side facing towards the concrete pour. The membrane may be installed in any convenient length. Secure the top of the membrane using a batten such as a termination bar or by fixing 50mm below the top edge using large flat headed fasteners or fasteners with washers to spread the load. Fixings can be made through the selvedge so that membrane lays flat and allows firmly rolled overlaps.

Immediately remove completely the plastic release liner from the Preprufe® 300R surface.

Any initial tack will quickly disappear. Fixings not made through the selvedge must be covered with a 100mm x 100mm patch of Preprufe® Tape.

Ensure the underside of the succeeding sheet is clean, dry and free from contamination before attempting to overlap.

Overlaps

Selvedge Overlaps - Roll all overlaps firmly to ensure a watertight seal.

Roll Ends and Cut Edges – Overlap all roll ends and cut edges by a minimum 75mm and ensure the area is clean and free from contamination. Clean the surface with a damp cloth if necessary. If contamination is present and cannot be removed by damp cloth, consult the NURALITE Technical Department.

Allow to dry and apply Preprufe® Tape centred over the lap and roll firmly. Immediately remove completely the plastic release liner from the Preprufe® Tape.

Installation of Membrane to Internal and External Corners

When installing membrane to internal or external corners, follow the forming procedure shown at the end of this section.

Penetrations

Use the following steps to seal around penetrations such as service pipes, piles, lighting conductors, bolts etc.

Grout around the penetration if the penetration is not stable. Scribe membrane tight to the penetration. If the membrane is not within 12mm of the penetration, apply Preprufe® Tape to cover the gap.

Wrap the penetration with Preprufe® Tape by positioning the tape 12mm above the membrane.

Mix and apply Bituthene® LM around the penetration using a 20mm fillet to form a watertight seal between the Preprufe® 300R membrane and the Preprufe® Tape.

JUNCTION WITH ASSOCIATED WATERPROOF MEMBRANES AFTER CONCRETE PLACEMENT

Bituthene® Sheet Membranes

Apply Bituthene® 3000 self-adhesive sheet membrane onto the previously installed Preprufe® 300R, to overlap a minimum 150mm. Roll firmly to facilitate overlap bond and then seal the perimeter edge of Bituthene® 3000 with a 2.5mm thick x 150mm application of Bituthene® LM.

INSTALLATION METHOD STATEMENT

REPAIR OF DAMAGED MEMBRANE

Repair damage by wiping the membrane surface with a damp cloth to ensure the area is clean and free from contaminants. Allow to dry. Apply Preprufe® Tape centred over the damaged area and pressure roll firmly.

Any areas where Preprufe® adhesive has been damaged shall be covered with Preprufe® Tape. Remove plastic release liner from the tape. Where exposed selvedge has lost adhesion or laps have not been sealed, ensure the area is clean and dry and cover with fresh Preprufe® Tape, rolling firmly. Alternatively, gently use a hot air gun or similar to activate adhesive and firmly roll the lap to achieve a watertight seal.

PLACEMENT OF CONCRETE

Concrete Placement Interval

Concrete shall be poured within 42 days of membrane application.

Concrete Placement Interval

Concrete must be placed and compacted carefully to avoid damage to the membrane. Compaction must be thorough if full waterproof integrity and membrane to concrete bond is to be achieved.

REMOVAL OF FORMWORK

Preprufe® 300R can be applied to removable formwork, such as slab perimeters, elevator and lift pits etc. Formwork must remain in place until the poured concrete has gained sufficient compressive strength to develop the surface bond.

A minimum concrete compressive strength of 10 N/mm² is recommended prior to stripping formwork supporting Preprufe®. Premature stripping may result in displacement of the membrane and/or spalling of the concrete.

As a guide, a structural concrete mix with an ultimate strength of 40 N/mm², will require a concrete cure time of approximately 6 days at an average ambient temperature of 4°C, or 2 days at 21°C.

APPLICATION RECORDS

Inspection Test Plan

The applicator must maintain records for future reference, including a photographic record of each stage of application.

The application manager should draw up an ITP covering the records required, that can be used and completed by the applicators.

As a minimum requirement the following records must be maintained:

- 1) Application area
- 2) Lot numbers of all materials used
- 3) Substrate condition and faults identified
- 4) Method of rectification (by others)
- 5) Waterproofing issues, faults and rectifications raised during the application
- 6) Post application examination results:
- 7) Inspection for damage to waterproofing following reinforcing placement.
- 8) Inspection immediately prior to concrete placement.

INSTALLATION METHOD STATEMENT

SAFE2TORCH CHECK LIST (PRIOR TO BASE SHEET INSTALLATION)

It is recommended that anyone preparing a specification or applying a membrane should complete this check sheet and if any boxes are ticked avoid the use of a direct torch-on application in these areas.

Project name: _____

Form completed by: _____

Company: _____

Area ready: _____

Applicator _____

Decks and Insulation	X / ✓
Timber / Other combustible materials.	
Metal deck (refurbishment) where old materials may accumulate in the troughs.	
Insulation – unless specifically designed and tested for use with torch-on membranes.	

Details	X / ✓
Expansion joints with voids and/or combustible fillers.	
Bitumen or timber fillets.	
Detail under all abutments to roof tiles, slates and roofing iron.	
All timber substrates.	
Change in level details with fixed timber or plastic fascias and/or all soffits, gutters or restricted spaces.	
Windowsills and frames, door sills, louvered vents, air ducts, intakes and outtakes.	
Junctions to existing waterproofing with flammable insulation/deck materials.	
Vulnerable plastic curbs, domes, pipes and the like.	
Working when in close proximity to potentially flammable coatings and shrinkwrap.	
Cladding and roofing underlays.	
Working in close proximity to stored chemicals, flammable liquids and explosives.	

Existing weathering components with concealed flammable materials.	X / ✓
Timber, DPC or sarking membranes beneath fixed metal capping systems.	
Existing kitchen extraction plant coated in oils or fats.	
Flammable wrapping to trunking/ducting/bitumen sheet rolls and roll inserts.	
Timber cladding.	
Existing metal or plastic copings/capping's.	

INSTALLATION METHOD STATEMENT

Notes

Signed:

Date:

BITUTHENE®/PREPRUFE® CONCRETE SUBSTRATE READINESS CHECKLIST

Project name: _____

Form completed by: _____

Company: _____

Area ready: _____

Applicator _____

X / ✓

Concrete cured with curing membranes removed. Concrete substrate contains less than 5% moisture content.	
Cavities and cracks filled with repair mortar, flushed off and cured.	
Waterstop installed to construction joints as per specification – located 75mm from rebar.	
Concrete surface firm with any soft concrete or laitance removed.	
All protrusions removed. Surface free from foreign matter.	
Mortar or bitumen fillets to all upstands and smooth 5mm radius to all external edges.	
If terminating into a chase, pre-form the chase and ensure it's straight and 20mm deep.	
Substrate clean, firm and suitable condition for laying the Nuralite system.	

Notes

Preprufe®300R

INSTALLATION METHOD STATEMENT

Preprufe® 300R

Signed: _____ Date: _____
BITUTHENE®/PREPRUFE® INSTALLED PRODUCT CHECKLIST BEFORE CONCRETE POOR

Project name: _____

Form completed by: _____

Company: _____

Area ready: _____

Applicator: _____

Prior to release of membraned area to other trades, carryout the following visual examinations to confirm membrane integrity.	
All membrane has been applied to correctly engineered blinding or formwork.	
Any membrane damage sustained has been repaired using Preprufe® 300R and Preprufe® Tape.	
All membrane has been installed with plain surface to blinding/formwork and adhesive surface facing to receive concrete.	
All plastic release film has been fully removed from Preprufe® 300R and Preprufe® Tape.	
All selvedge's have been overlapped by the correct amount and align with the selvedge guide marks printed on the Preprufe® 300R.	
All selvedge overlaps are fully sealed, without wrinkles or fishmouths and have been pressure rolled.	
All end laps and cut edge laps have been sealed using Preprufe® Tape and have been pressure rolled.	
All corners are formed correctly and cut edges sealed using Preprufe® Tape and have been pressure rolled. Corner folds shall be well creased and cleanly folded.	
All fastener penetrations have been patched using 100mm x 100mm patches of Preprufe® Tape and the patches have been pressure rolled.	
Surface of Preprufe® is largely clean, free of all ponded water, concrete splashes or other contaminants.	
All penetrations are detailed and sealed using Preprufe® Tape and Bituthene® LM.	
All Bituthene® LM applications are cured and non tacky.	
Expansion joint waterstops are located as per specification requirements, undamaged, firmly bonded to the Preprufe® membrane and joined in a watertight manner.	
Construction joint waterstops are located as per specification requirements, undamaged and firmly fixed to substrate.	

If all examination parameters above are met, the area may be released for reinforcing installation etc.

INSTALLATION METHOD STATEMENT

After reinforcing installation is complete, make a final examination to identify membrane damage that may have been sustained by other trades. Any damage identified must be rectified prior to concrete placement.

In addition, immediately prior to concrete placement, ensure the membrane surface is free from standing water.

Notes

Signed:

Date:

Preprufe®300R

INSTALLATION METHOD STATEMENT

DETAILS

Preprufe® 300R

NOTES:

All sharp edges/corners to be arised

Preparations

All surfaces must be smooth, clean and dry. Loose material and sharp protrusions should be removed mechanically. All areas receiving torch applied membrane should be primed with Bituthene Primer. Allow to dry completely. The newly applied primer should be protected from contamination.

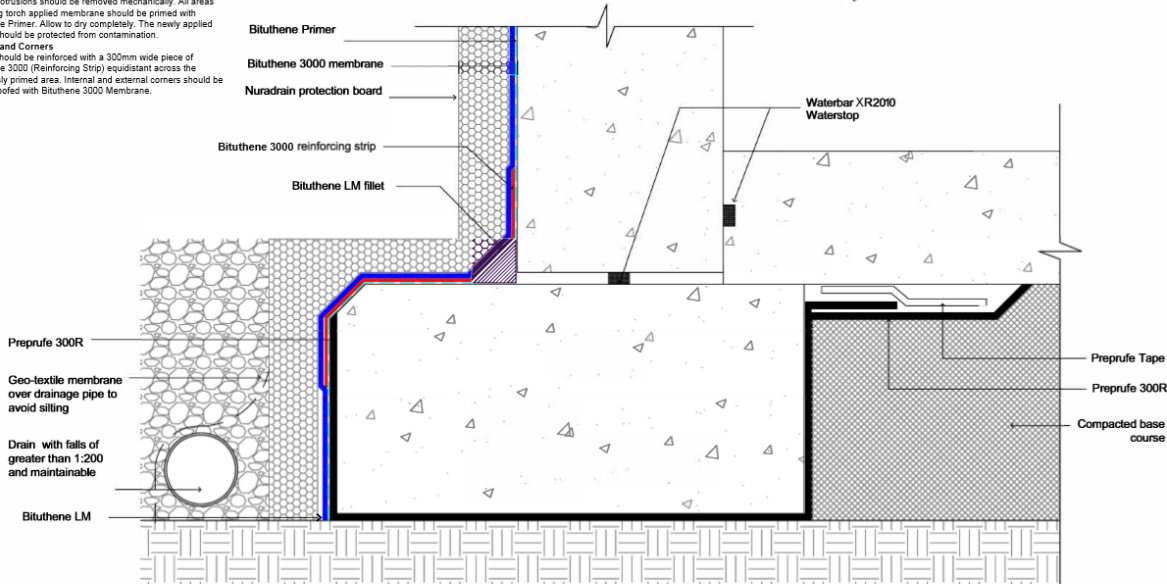
Angles and Corners

These should be reinforced with a 300mm wide piece of Bituthene 3000 (Reinforcing Strip) equidistant across the previously primed area. Internal and external corners should be waterproofed with Bituthene 3000 Membrane.

THIS DRAWING IS INDICATIVE ONLY AND BY NO MEANS COMPREHENSIVE



gcp applied technologies



Nuralite Waterproofing Ltd.

600 Leam Leicester Ave,
Mt Wellington, Auckland
0800 687 254
info@nuralite.co.nz
www.nuralite.co.nz

*All applications to be installed by an authorised nuralite applicator. All materials to be applied in accordance with standard published installation instruction and product data sheet should be consulted at all times. This drawing is for comment & approval it must not be used for construction until authorised by the site specifier or other relevant technical expert. This detail drawing is to be used only as a part of the nuralite specification package.
All drawings are subject to copyright. Unauthorised use is prohibited
© NURALITE WATERPROOFING LTD.*

PRODUCT:

BITUTHENE/PREPRUFE 300R

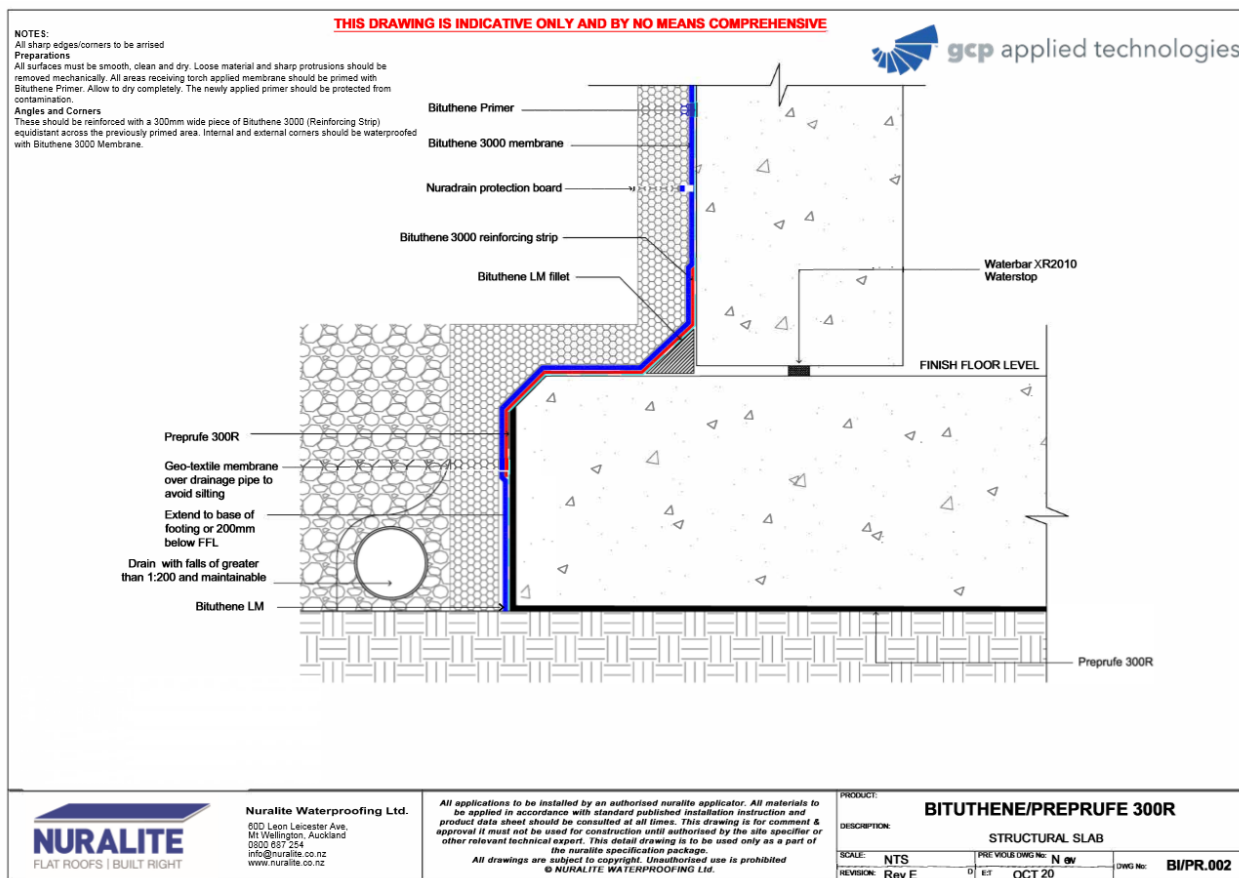
DESCRIPTION:

FLOOR SLAB AT FOOTING LEVEL

SCALE: NTS	PREVIOUS DRAWING NO: New	DWG No: BI/PR.001
REVISION: Rev E	DATE: OCT 20	

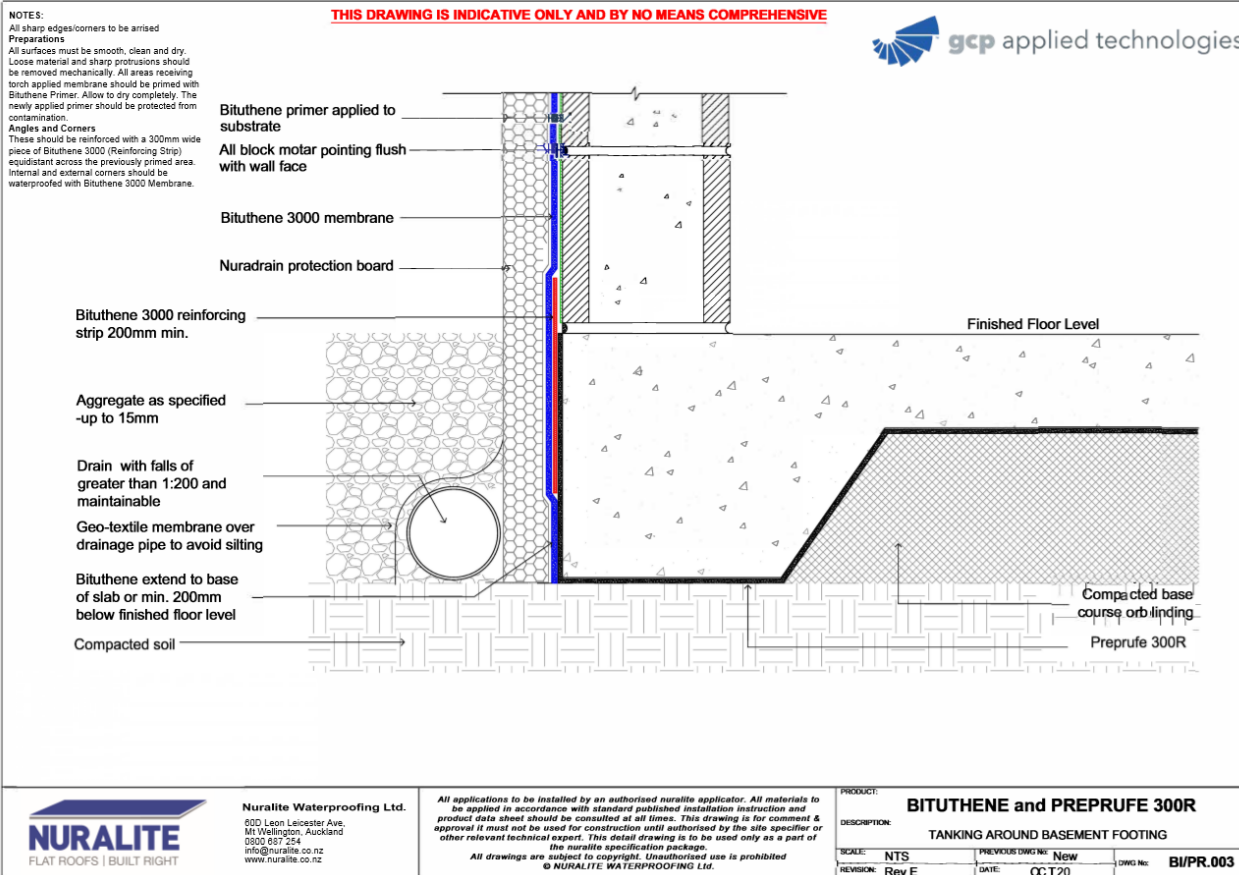
INSTALLATION METHOD STATEMENT

Preprufe® 300R



INSTALLATION METHOD STATEMENT

Preprufe® 300R



INSTALLATION METHOD STATEMENT

Preprufe®300R

NOTES:-
All sharp edges/corners to be arised

Preparations
All surfaces must be smooth, clean and dry. Loose material and sharp protrusions should be removed mechanically. All areas receiving torch applied membrane should be primed with Bituthene Primer. Allow to dry completely. The newly applied primer should be protected from contamination.

Angles and Corners
These should be reinforced with a 300mm wide piece of Bituthene 3000 (Reinforcing Strip) equidistant across the previously primed area. Internal and external corners should be waterproofed with Bituthene 3000 Membrane.

THIS DRAWING IS INDICATIVE ONLY AND BY NO MEANS COMPREHENSIVE

gcp applied technologies

Concrete Wall

Preprufe Membrane

Preprufe Tape

Extend Preprufe at least 400mm above slab and protect from oversplash

Adcor 500S Waterstop

Concrete Slab

Preprufe 300R Membrane

Preprufe Tape

Compacted earth and mud slab

Nuradrain Protection Board

Soil retention system

NURALITE
FLAT ROOFS | BUILT RIGHT

Nuralite Waterproofing Ltd.
600 Leon Leicester Ave.
Mt Wellington, Auckland
0900 887 254
info@nuralite.co.nz
www.nuralite.co.nz

All applications to be installed by an authorised nuralite applicator. All materials to be applied in accordance with standard published installation instruction and product data sheet should be consulted at all times. This drawing is for comment & approval it must not be used for construction until authorised by the site specifier or other relevant technical expert. This detail drawing is to be used only as a part of the nuralite specification package.

All drawings are subject to copyright. Unauthorised use is prohibited
© NURALITE WATERPROOFING Ltd.

PRODUCT:
PREPRUFE 300R

DESCRIPTION:
BLIND SIDE WALL TO SLAB TIE-IN

SCALE: NTS

REVISION: Rev E

PREVIOUS DWG No: New

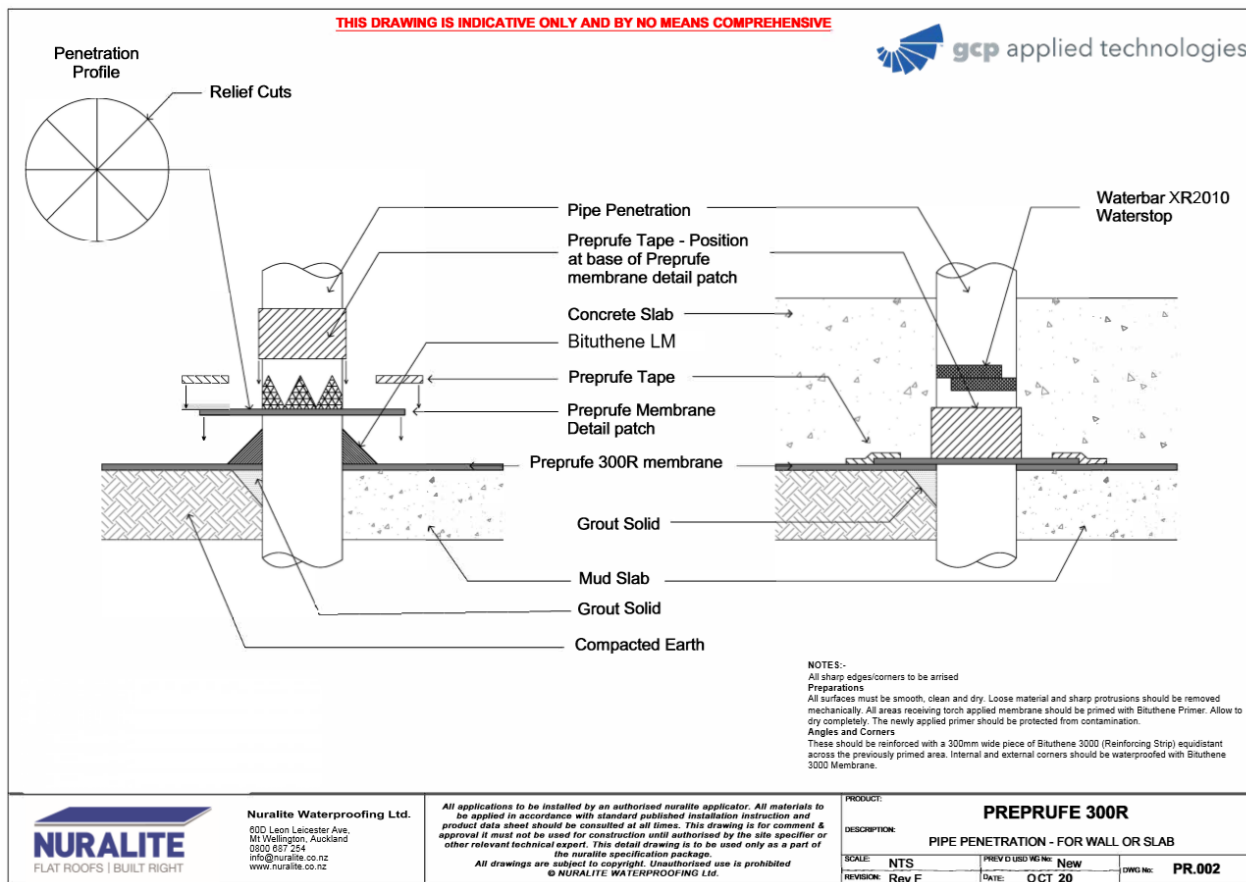
DATE: OCT 20

DWG No: PR.001

NURALITE
FLAT ROOFS | BUILT RIGHT

INSTALLATION METHOD STATEMENT

Preprufe®300R



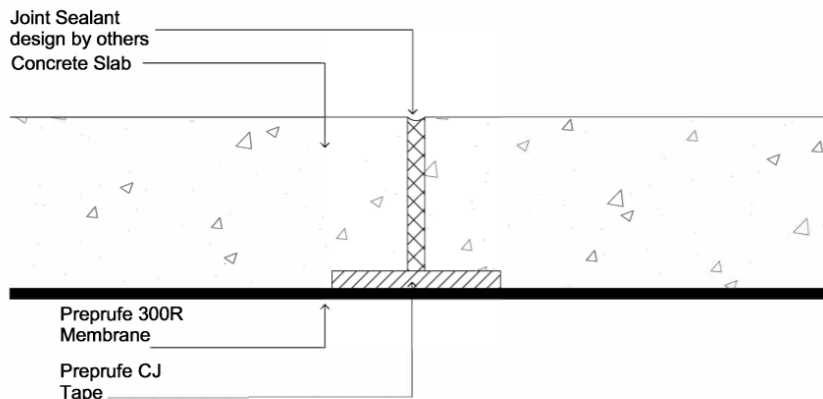
INSTALLATION METHOD STATEMENT

Preprufe® 300R



NOTES:-
All sharp edges/corners to be arised
Preparations
All surfaces must be smooth, clean and dry. Loose material and sharp protrusions should be removed mechanically. All areas receiving torch applied membrane should be primed with Bituthene Primer. Allow to dry completely. The newly applied primer should be protected from contamination.
Angles and Corners
These should be reinforced with a 300mm wide piece of Bituthene 3000 (Reinforcing Strip) equidistant across the previously primed area. Internal and external corners should be waterproofed with Bituthene 3000 Membrane.

THIS DRAWING IS INDICATIVE ONLY AND BY NO MEANS COMPREHENSIVE



NOTE: FOR JOINTS WITH EXPECTED MOVEMENT NOT TO EXCEED 13mm



Nuralite Waterproofing Ltd.
800 Leon Leicester Ave.
Mt Wellington, Auckland
0900 887 254
info@nuralite.co.nz
www.nuralite.co.nz

All applications to be installed by an authorised nuralite applicator. All materials to be applied in accordance with standard published installation instruction and product data sheet should be consulted at all times. This drawing is for comment & approval it must not be used for construction until authorised by the site specifier or other relevant technical expert. This detail drawing is to be used only as a part of the nuralite specification package.
All drawings are subject to copyright. Unauthorised use is prohibited
© NURALITE WATERPROOFING LTD.

PRODUCT: PREPRUFE 300R			
DESCRIPTION: JOINT-PREPRUFE WATERPROOFING SYSTEM			
SCALE: NTS	PREVIOUS DWG No: NEW	DATE: OCT 20	
REVISION: Rev E	DWG No: PR.003		



INSTALLATION METHOD STATEMENT

Preprufe® 300R



NOTES:-

All sharp edges/corners to be arised

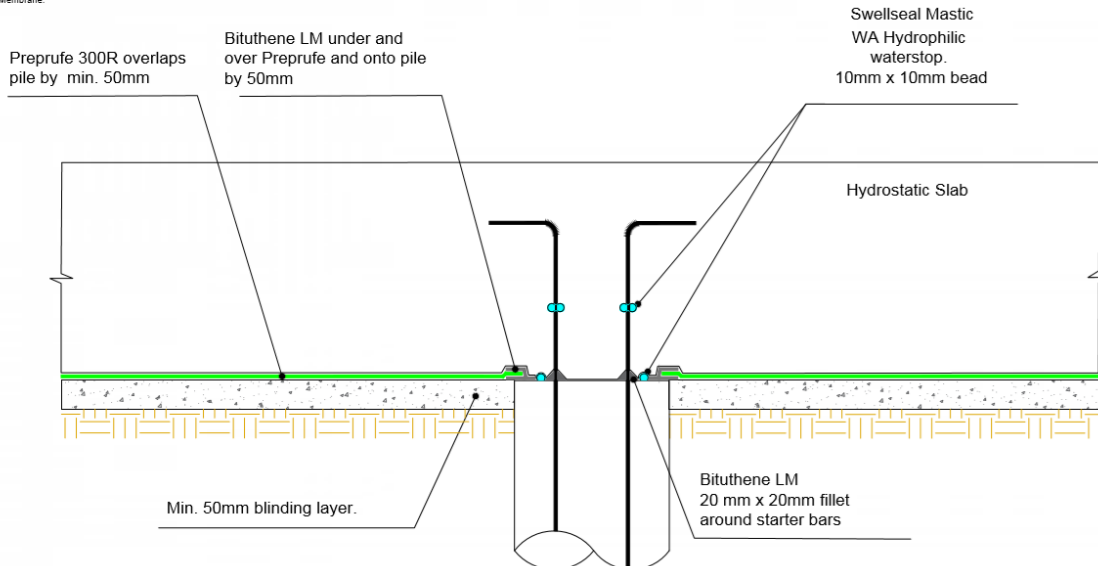
Preparations

All surfaces must be smooth, clean and dry. Loose material and sharp protrusions should be removed mechanically. All areas receiving torch applied membrane should be primed with Bituthene Primer. Allow to dry completely. The newly applied primer should be protected from contamination.

Angles and Corners

These should be reinforced with a 300mm wide piece of Bituthene 3000 (Reinforcing Strip) equidistant across the previously primed area. Internal and external corners should be waterproofed with Bituthene 3000 Membrane.

THIS DRAWING IS INDICATIVE ONLY AND BY NO MEANS COMPREHENSIVE



Nuralite Waterproofing Ltd.

600, Leon, Leicester Ave.
Mt Wellington, Auckland
0800 687 254
info@nuralite.co.nz
www.nuralite.co.nz

All applications to be installed by an authorised nuralite applicator. All materials to be applied in accordance with standard published installation instruction and product data sheet should be consulted at all times. This drawing is for comment & approval it must not be used for construction until authorised by the site specifier or other relevant technical expert. This detail drawing is to be used only as a part of the nuralite specification package.
All drawings are subject to copyright. Unauthorised use is prohibited
© NURALITE WATERPROOFING LTD.

PRODUCT:

PREPRUFE 300R

DESCRIPTION:

TERMINATION TO PILE

SCALE: NTS
REVISION: Rev E

PREVIOUS EDITION: New
DATE: OCT 20

DWG NO: PR.004

INSTALLATION METHOD STATEMENT

Preprufe®300R



NOTES:-

All sharp edges/corners to be arrised

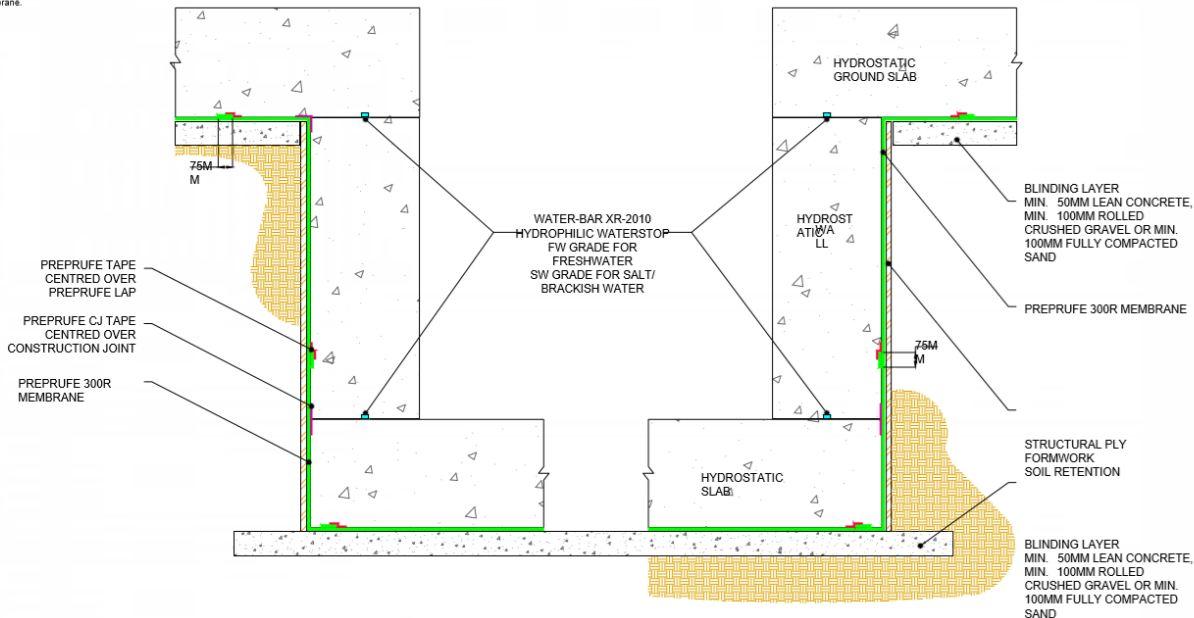
Preparations

All surfaces must be smooth, clean and dry. Loose material and sharp protrusions should be removed mechanically. All areas receiving torch applied membrane should be primed with Bituthene Primer. Allow to dry completely. The newly applied primer should be protected from contamination.

Angles and Corners

These should be reinforced with a 300mm wide piece of Bituthene 3000 (Reinforcing Strip) equidistant across the previously primed area. Internal and external corners should be waterproofed with Bituthene 3000 Membrane.

THIS DRAWING IS INDICATIVE ONLY AND BY NO MEANS COMPREHENSIVE



Nuralite Waterproofing Ltd.

600 Leon Leicester Ave.
Mt Wellington, Auckland
0800 687 254
info@nuralite.co.nz
www.nuralite.co.nz

All applications to be installed by an authorised nuralite applicator. All materials to be applied in accordance with standard published installation instruction and product data sheet should be consulted at all times. This drawing is for comment & approval it must not be used for construction until authorised by the site specifier or other relevant technical expert. This detail drawing is to be used only as a part of the nuralite specification package.
All drawings are subject to copyright. Unauthorised use is prohibited
© NURALITE WATERPROOFING LTD.

PRODUCT:

PREPRUFE 300R

DESCRIPTION:

LIFT PIT

SCALE: NTS	PREVIOUS SERIES No: New	DWG No: PR.005
REVISION: Rev E	DATE: OCT 20	