

Product Description

Nuraseal is a self-adhesive bitumen membrane made with an elastomeric compound (SBS), a reinforced fibre glass mat carrier and a high density polyethylene (HDPE) film. As an extremely versatile product Nuraseal can be used for damp proofing basements, block walls and retaining walls.

Benefits

- Adheres to various substrate types.
- Eliminates water migration.
- Self adhesive & lightweight membrane.
- Roll sizes are 1.5mm thick and 1m x 20m.
- No torch flame required for application.
- BRANZ Appraised product No. 804 (2012).
- Pre manufactured self adhesive selvedge .

Uses

Nuraseal is designed for waterproofing the lower storey of a building which is wholly or partly below ground where there is no risk of hydrostatic water pressure.

Scope of Use

- Block walls.
- Retaining walls.
- Foundations.

Associated Products

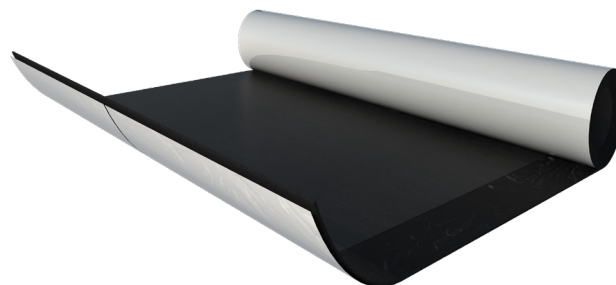
Nuraflux QD is a primer used to increase the tackability of the Nuraseal when it is laid on the block wall or retaining wall. This quick drying primer is designed to activate and prepare substrates prior to the application of membranes.

Nuradrain is a backfill protection sheet and vertical drainage board specifically designed for below-grade tanking. Nuradrain assists with water flow behind walls by providing an unimpeded drainage path to the base drainage coil.

In order to prevent damage, Nuraseal must be protected with Nuradrain protection board as soon as possible.

System Preparation

All surfaces must be checked to ensure they are dry, clean, smooth and free from sharp edges. Surfaces must be free from loose or foreign materials, oil, grease or other deleterious material that may affect adhesion or may damage other membranes.



>> **NURASEAL:** A prefabricated bitumen membrane with a self adhesive selvedge used in below grade damp proofing.

Technical Information

Nuraseal will prevent water vapour from penetrating the interior face of basement retaining walls and floors in spaces where moisture may cause damage. Nuraseal has a vapour flow resistance of not less than 90MN s/g.

Nuraseal is suited to areas where there is restricted use of torch on flame. However Nuraseal should not be applied where temperatures are below +10°C or above 50°C.

Nuraseal should be kept protected from the sun as much as possible in order to prevent damage from UV radiation. It is recommended to cover Nuraseal within a few hours of application.

Avoid plants adjacent to the Nuraseal membrane or use Nuraply 3PG instead.

Warranty

Nuraseal is warranted for 20 years for material defects when installed in accordance to BRANZ appraisal and continuously protected from sunlight and ultra violet (UV) radiation. Once installed Nuraseal has a servicable life of at least 50 years.

TECHNICAL SPECIFICATIONS		
Measurements	Length x Width 20m x 1m	Thickness 1.5mm
Watertightness EN 1928-B	kPa	Exceeds
Resistance to impact EN 12691-A	mm	≥300
Resistance to static loading EN 12730-A	kg	≥5

The information in this information sheet is based on our experience and testing. It represents the latest information available at the time of printing, but no guarantee of its accuracy is made or implied, nor responsibility taken for use to which this information may be put.

We reserve the right to alter or up-date information parameters and formulations at any time without notice.