



## Nuralite Accessories **NURAPADS** and **NURAJACKS**

### Product Description

As required by some local body councils, tile and timber deck surfaces should be removable to allow future access to the waterproofing membrane below. Nurapads and Nurajacks provide the ultimate solution to achieve this.

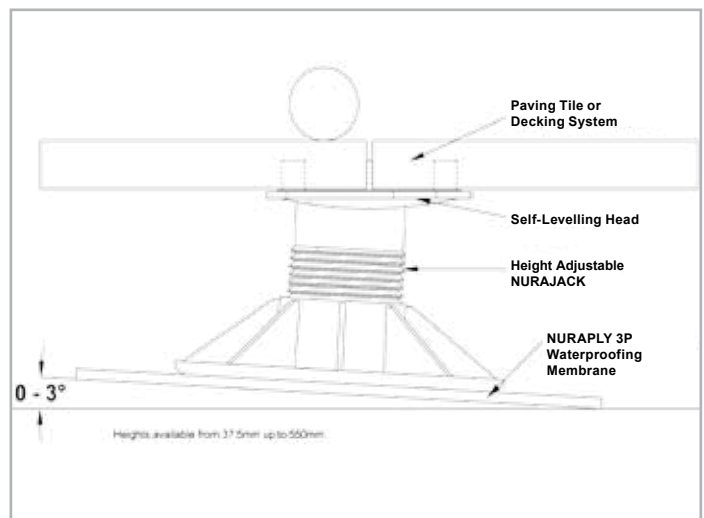
Nurajacks are height adjustable and therefore allow the tiles or decking to be raised up to the level of the interior living space to create the desired indoor/outdoor flow.

Laying a deck with Nurajacks is easy, whether it be with tiles, pavers or timber decking. The Nurajacks simply rest on top of the waterproofing membrane and the tiles or joists sit on the self-levelling head of the Nurajack. The void between the decking and the membrane can be used to accommodate pipes and other services. Adding an acoustic shim is a cost effective way to further enhance the acoustic reduction properties of the system.

### Unique Features and Benefits

**Self-Levelling Heads** - The unique self-levelling head of the Nurajack provides clients with a level deck every time. With other deck-jacks, tilers must resort to placing ad-hoc shims under the base of the jacks - a time-consuming practice that has the potential to damage the waterproofing membrane through point loading. With Nurajacks, the deck load is evenly spread on their wide base, ensuring stability and that the integrity of the membrane is maintained.

**Height Adjustment Feature** - With Nurajacks, the tiler is able to complete the installation with perfect accuracy by adjusting the height of the tiles from above, without the need to remove the tiles. A screwdriver or special adjustment key (available from Nuralite) can be used for this purpose.



**NURALITE**  
THE FLAT ROOF EXPERTS

## Sizing Selection



To calculate the quantities and sizes required, a calculator is available at:

[www.nuralite.co.nz/Nurajacks/nurajack-quantity-calculator.aspx](http://www.nuralite.co.nz/Nurajacks/nurajack-quantity-calculator.aspx)

## Technical Information and Installation Requirements

|                         | Nurapads | Nurajacks |
|-------------------------|----------|-----------|
| Diameter:               | 150mm    | 205mm     |
| Height of Tile Spacers: | 10mm     | 18mm      |
| Max Loading per Pad:    | 1000kg   | 1000kg    |

For a high performance, fully warranted system, specify Nuraply 3P or Nuratech waterproofing membranes with Nurajacks to support the tiles, pavers or decking. Nuralite offers a 20 year material performance warranty on all products installed as part of the complete system.

If you are intending to install Nurajacks over an alternative waterproofing system please check with the supplier beforehand to ensure all products on the deck are compatible. Some suppliers warranties may be voided

by the use of non-approved systems. Liquid membrane systems should be avoided as they require future recoating and maintenance to maintain their integrity.

A structural tile or paver must be used with the Nurajack system. Before purchasing your tile or paver check that it is strong enough to carry foot traffic weight when supported on four edges, and that the supplier warrants it will work with the Nurajack system. See your Nuralite representative for a list of suppliers with suitable structural tiles and pavers available.

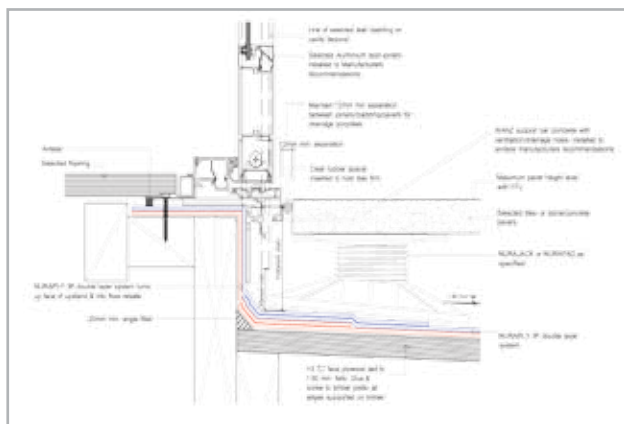
Nurajacks are made from high-density polypropylene injection moulding. The maximum loading of 1000kg demonstrates the strength of the Nurajacks. If heavy loads are anticipated this must be considered when specifying, and designing the waterproofing system. Be aware that the Nurajack system is not designed to support moving vehicles such as cars or window cleaners. The waterproofing membrane must be clean and clear of foreign objects before installing the Nurajacks. Ensure the system is braced against the surrounding cladding systems using Nuralite's Clear Packers.

## Detailed Drawings

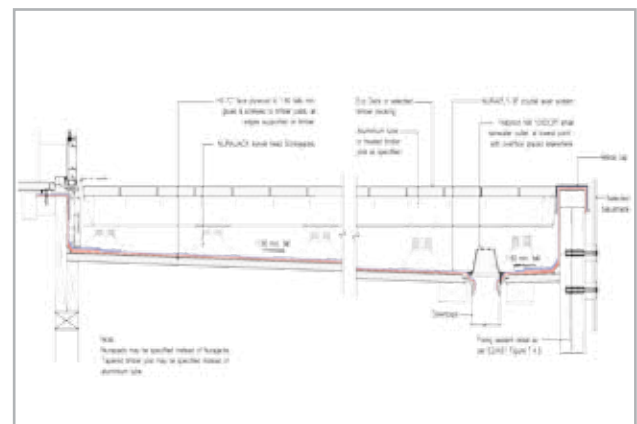
A complete set of details to document the installation of tiles, pavers or timber decking on Nurajacks is available to download at

[www.nuralite.co.nz/Login.aspx](http://www.nuralite.co.nz/Login.aspx)

### Rebated Aluminium Door/Deck Threshold



### Frameless Balustrade Timber Decking on Aluminium Tube



To the best of our knowledge, the information in this brochure is accurate at the time of printing. Nuralite Waterproofing Ltd reserves the right to alter information, formulation or parameters at any time without notice.

### Nuralite Waterproofing Ltd

53A Victoria Street, Onehunga, Auckland 1061

Ph 09 579 2046 Fx 09 579 5136

E [info@nuralite.co.nz](mailto:info@nuralite.co.nz)

